

Crosskate 616 Backcountry™ Brake Pad Replacement Instructions

Follow these instructions and disregard the instructions that came packaged with your skates!

Kit includes: 4 Crosskate Brake Pads

Tools needed:

3mm allen key 4mm allen key
Flathead screwdriver Pliers

1. Remove the 3 Brake Disc Screws (31) with a 3mm allen key. Make sure the disc is free from the hub.
2. Remove the Rear Axle Screw (32) with a 4mm allen key.
3. Slide the wheel off of the Rear Axle (33).
4. If you need more brake cable slack, loosen the Cable Collar or the Rear Noodle. (Make sure you readjust when you are done!)
5. Remove the old Brake Pads (27) with a flathead screw driver. This may take some effort. If your brake pads are glued in, you must remove all the glue and debris from the slot before installing new pads. Bring your skates to an Authorized Crosskate Dealer if you need help with this procedure.
7. Slide the new pads into the Brake Arms, in the direction shown, ensuring that they are fully seated into the Brake Arm's T-slots. There is a small round protrusion on the back of each brake pad that fits into a corresponding hole in each Brake Arm. This feature secures the pads in each Brake Arm, and requires deliberate pressure to take them out.
8. Replace the Rear Wheel and Brake Disc, making sure to tighten all fasteners securely.
9. Readjust the brake system to account for the new pads.



YOU MAY NEED NEW BRAKE PADS IF: Increased braking effort does not result in increased braking force.

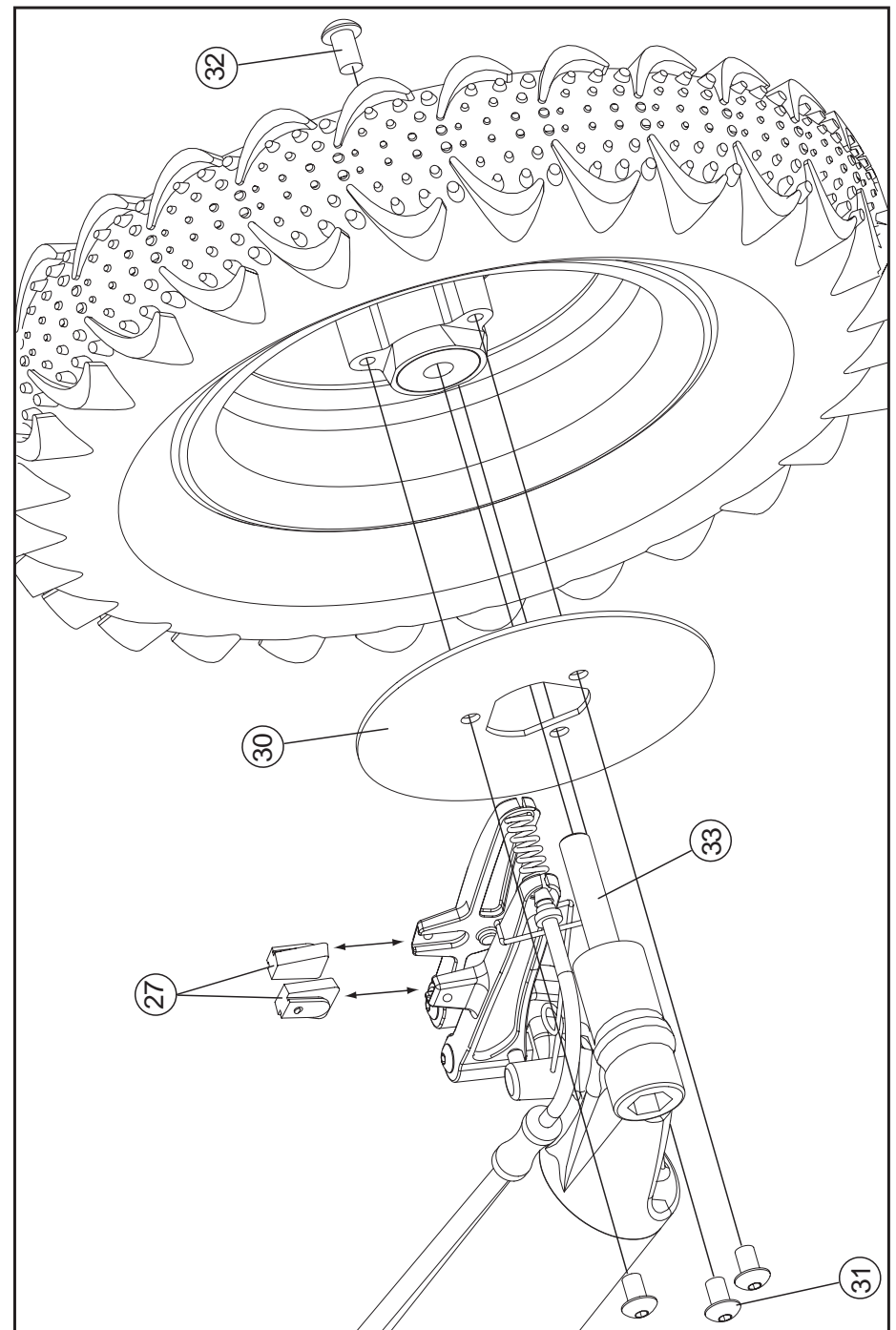
Changing diagrams on backside

CROSSKATE™

Crosskate Inc.
13R Bessom St.
Marblehead, M.A. 01945
1.877.CROSSK8



www.crosskate.com



Using this equipment can be a hazardous activity even under the best of circumstances. Through the purchase of this equipment, the user understands and agrees to assume all responsibility for any damage or injury caused by the use of these skates. Please refer to the Owner's Manual for the full Crosskate Limited Warranty.

Printed in Taiwan

copyright 2001 Crosskate